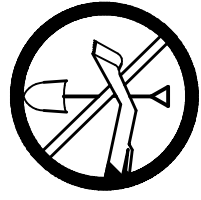


CALL BEFORE YOU DIG

UTILITY PROTECTION CENTER



TENNESSEE
1-800-351-1111

THREE WORKING DAYS BEFORE YOU DIG
IT IS THE CONTRACTOR'S RESPONSIBILITY TO CONTACT UTILITY COMPANIES PRIOR TO ANY CONSTRUCTION AS THE LOCATION OF UTILITIES SHOWN ON THIS PLAN ARE APPROXIMATE AND POSSIBLY INCOMPLETE. THEREFORE APPROXIMATE LOCATION OF ALL UNDERGROUND UTILITIES IS WITHHELD.

EROSION CONTROL NOTES

1. EROSION CONTROL MEASURES ARE TO BE ACCOMPISHED PRIOR TO ANY OTHER CONSTRUCTION ON THE SITE AND MAINTAINED UNTIL PERMANENT GROUND COVER IS ESTABLISHED.
2. EARTH DISTURBING ACTIVITIES SHALL BE KEPT AT A MINIMUM. SEDIMENT PONDS SHALL BE INSTALLED AS SOON AS GRADING OF AREAS IS COMPLETED.
3. ANY ADDITIONAL EROSION CONTROL DEVICES NECESSARY TO PROHIBIT SEDIMENT AND/OR LEAKAGE FROM THE SITE SHALL BE PROVIDED AS DIRECTED BY THE ENGINEER AND/OR LOCAL INSPECTION.
4. EROSION CONTROL MEASURES WILL BE MAINTAINED AT ALL TIMES. ADDITIONAL EROSION AND SEDIMENT CONTROL MEASURES WILL BE INSTALLED IF DEEMED NECESSARY BY ON SITE INSPECTION.
5. SEDIMENT BARRIERS, TRAPS, AND PONDS SHALL BE INSPECTED AND MAINTAINED AS OFTEN AS NECESSARY SUCH THAT ALL DEVICES ARE FUNCTIONING PROPERLY. ANY TIME THAT USEFUL VOLUMES ARE FILLED TO 60%, DEVICES SHALL BE CLEANED AND REPAIRS MADE AS NECESSARY. ALL DEVICES SHALL BE REPAIRED TO ORIGINAL CONDITION AND REPAIRS SHALL BE RECORDED. ALL DEVICES SHALL BE REPAIRED TO, OR OTHERWISE MAINTAINED TO INSURE PROPER FUNCTION.
6. FREQUENT INSPECTIONS, MAINTENANCE, AND/OR REPAIR OF EROSION AND SEDIMENT CONTROL PRACTICES INCLUDING PROPER VEGETATION COVER SHALL BE THE RESPONSIBILITY OF THE GENERAL CONTRACTOR AND/OR PROPERTY OWNER.
7. CONSTRUCTION EXITS SHALL BE MAINTAINED AT ALL TIMES, AND ANY MUD TRACKED ONTO STREETS SHALL BE CLEANED IMMEDIATELY OR AT DIRECTION OF ENGINEER. USE WASHRACK AS REQUIRED.
8. SEEDING EXCEPT AS NOTED SHALL BE PLANTED TO A DEPTH OF 4" OR MORE FOR SHOULDERS AND FILL SLOPES AND 6" OR MORE FOR CUT SLOPES. AREAS SHALL BE CLEANED, HARROWED UNTIL WELL PULVERIZED FOR A SMOOTH, UNIFORM, WELL BROKEN SOIL. LIME AND FERTILIZER SHALL BE THOROUGHLY MIXED IN THE TOP 4" OF PREVIOUSLY LOOSENED SOIL AND SOIL RETURNED TO A SMOOTH UNIFORM CONDITION. AFTER PLANTING, AREAS TO BE MULCHED WITH HAY OR STRAW OR APPLIED GRASSES ON GRAIN CROPS.
9. EROSION CONTROL DEVICES SHALL INCLUDE BUT NOT BE LIMITED TO CONSTRUCTION EXIT AS DETAILED, STORMDRAIN INLET AND OUTLET PROTECTION, SILT BARRIERS AT TOE OF FILL SLOPES.
10. ALL DRAINAGE EASEMENTS AND DETENTION PONDS SHALL BE STABILIZED UPON COMPLETION.

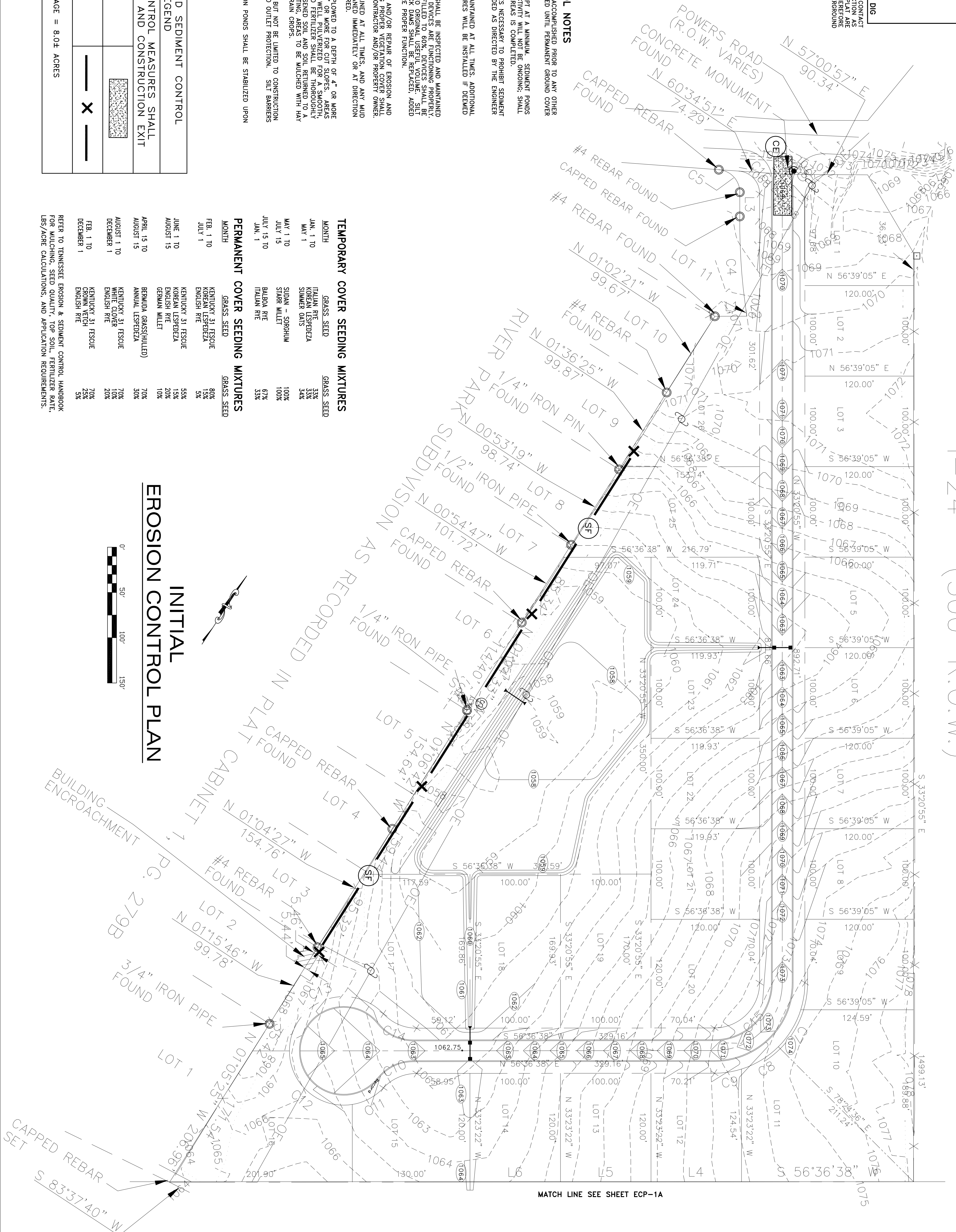
SOIL EROSION AND SEDIMENT CONTROL

INITIAL EROSION CONTROL MEASURES SHALL INCLUDE SILT FENCE AND CONSTRUCTION EXIT

CE	CONSTRUCTION EXIT	
SF	SEDIMENT BARRIER	

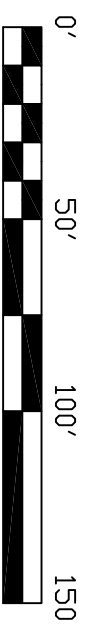
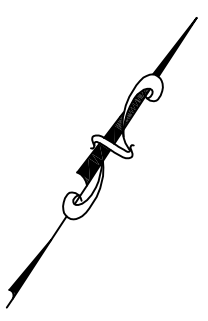
DISTURBED ACREAGE = 8.0± ACRES

1-24 (300' R.O.W.)



MATCH LINE SEE SHEET ECP-1A

INITIAL EROSION CONTROL PLAN



TEMPORARY COVER SEEDING MIXTURES

MONTH	GRASS SEED	GRASS SEED
JAN. 1 TO MAY 1	ITALIAN RYEGRASS KENTUCKY BLUEGRASS SUMMER OATS	33% 33% 34%
MAY 1 TO JULY 15	SUDAN - SORGHUM STAR WHEAT	100% 100%
JULY 15 TO JAN. 1	BALDPA RYE ITALIAN RYE	67% 33%

PERMANENT COVER SEEDING MIXTURES

MONTH	GRASS SEED	GRASS SEED
FEB. 1 TO JULY 1	KENTUCKY 31 FESCUE KOREAN LESPEDEZA ENGLISH RYE	80% 15% 5%
JUNE 1 TO AUGUST 15	KENTUCKY 31 FESCUE KOREAN LESPEDEZA ENGLISH RYE	55% 15% 20%
APRIL 15 TO AUGUST 15	BERMUDA GRASS(MULLED) ANNUAL LESPEDEZA	70% 30%
AUGUST 1 TO DECEMBER 1	KENTUCKY 31 FESCUE WHITE CLOVER ENGLISH RYE	70% 10% 20%
FEB. 1 TO DECEMBER 1	KENTUCKY 31 FESCUE CROWN VETCH ENGLISH RYE	70% 25% 5%

REFER TO TENNESSEE EROSION & SEDIMENT CONTROL HANDBOOK FOR MULCHING, SEED QUALITY, TOP SOIL, FERTILIZER RATE, LBS/ACRE CALCULATIONS, AND APPLICATION REQUIREMENTS.

REVISIONS

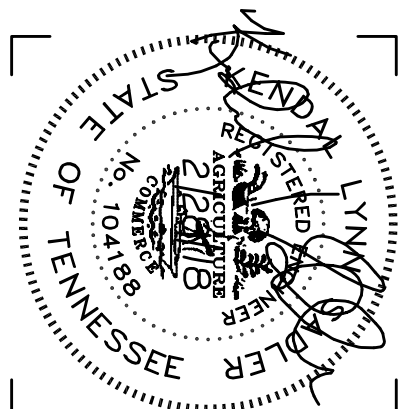
No.	Date

PROPOSED SUBDIVISION FOR:

MR. ALLAN HOWARD
SHELTON ROAD & POWERS ROAD
MANCHESTER, TENNESSEE

SADLER & ASSOCIATES
CONSULTING ENGINEERS
INCORPORATED

4866 WOODBURY HWY • MANCHESTER, TENNESSEE • 37355
Ph: 931-728-4961 • Email: ksadler@charter.net • Mob: 931-409-5090



Job No. 18-000
Date: 2/28/18
Drawn By: K.L.S.
Checked By: K.L.S.
Approved By: K.L.S.

DRAWING NO.

ECP-1

OF: